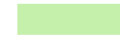


IAQ Map Legend - Winter Operation

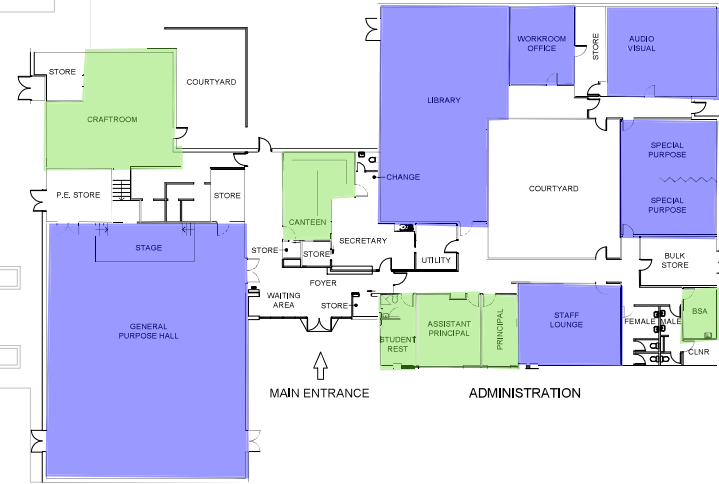
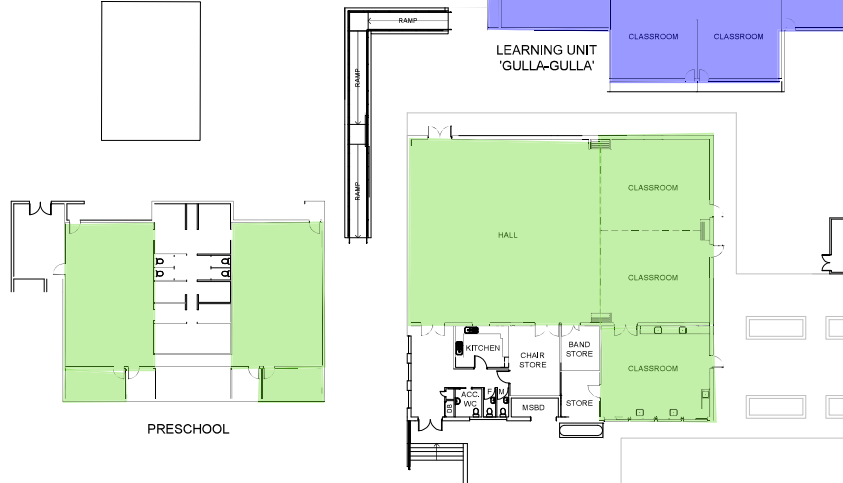
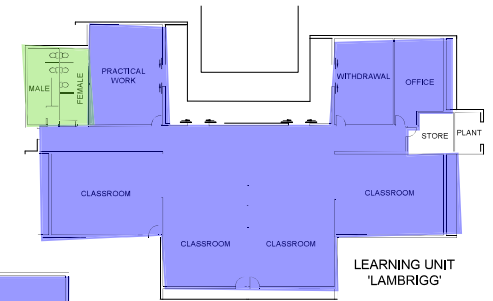
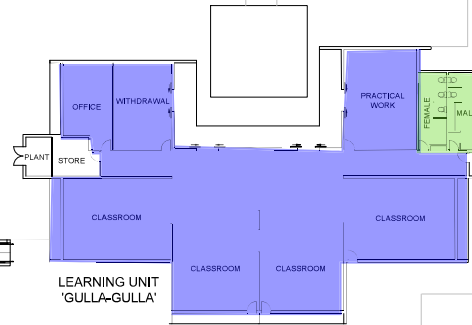
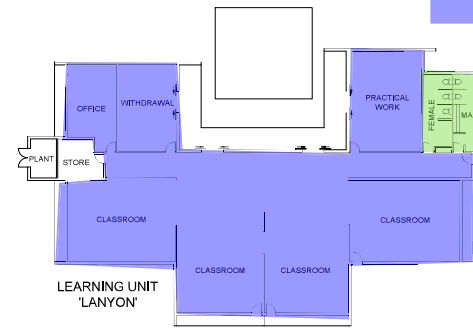
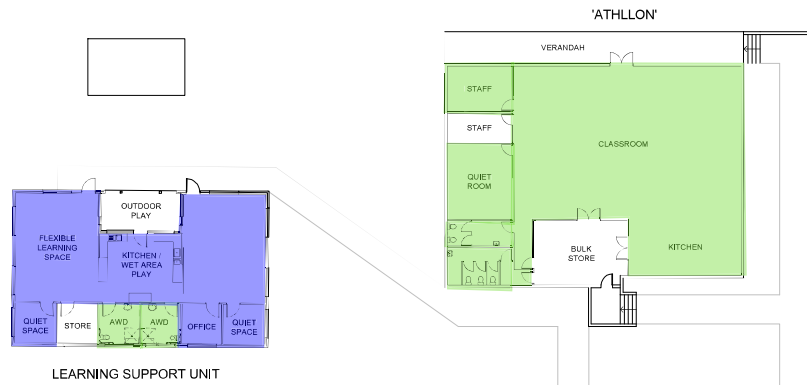


Natural ventilation: Operable windows and/or louvres should be used to manage fresh air, balancing thermal comfort and ventilation.



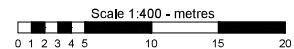
Mechanical ventilation: Fresh air is introduced by the heating, ventilation and air conditioning system when in operation. Windows can remain closed and no action is required by the school.

Note: White spaces are to be used in accordance with COVID-19 requirements and current health advice.



YAMBA ?? NO INTERNAL LAYOUT PLANS

ISSUE	AMENDMENT	DRAWN	VER'D	APP'D	DATE



SCALE
1:400
DATE
FEB 2019
DRAWING SHEET SIZE = A3



PROJECT
GOWRIE PRIMARY SCHOOL
INFRASTRUCTURE & CAPITAL WORKS
SCHOOL LAYOUT PLAN